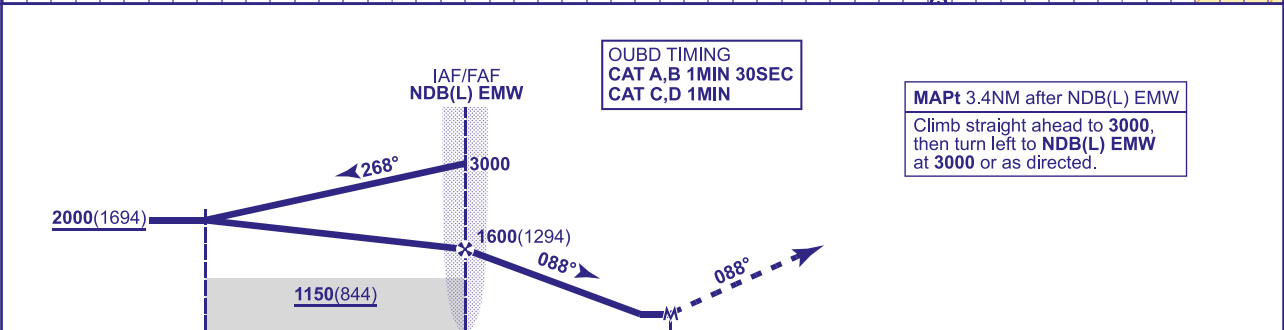
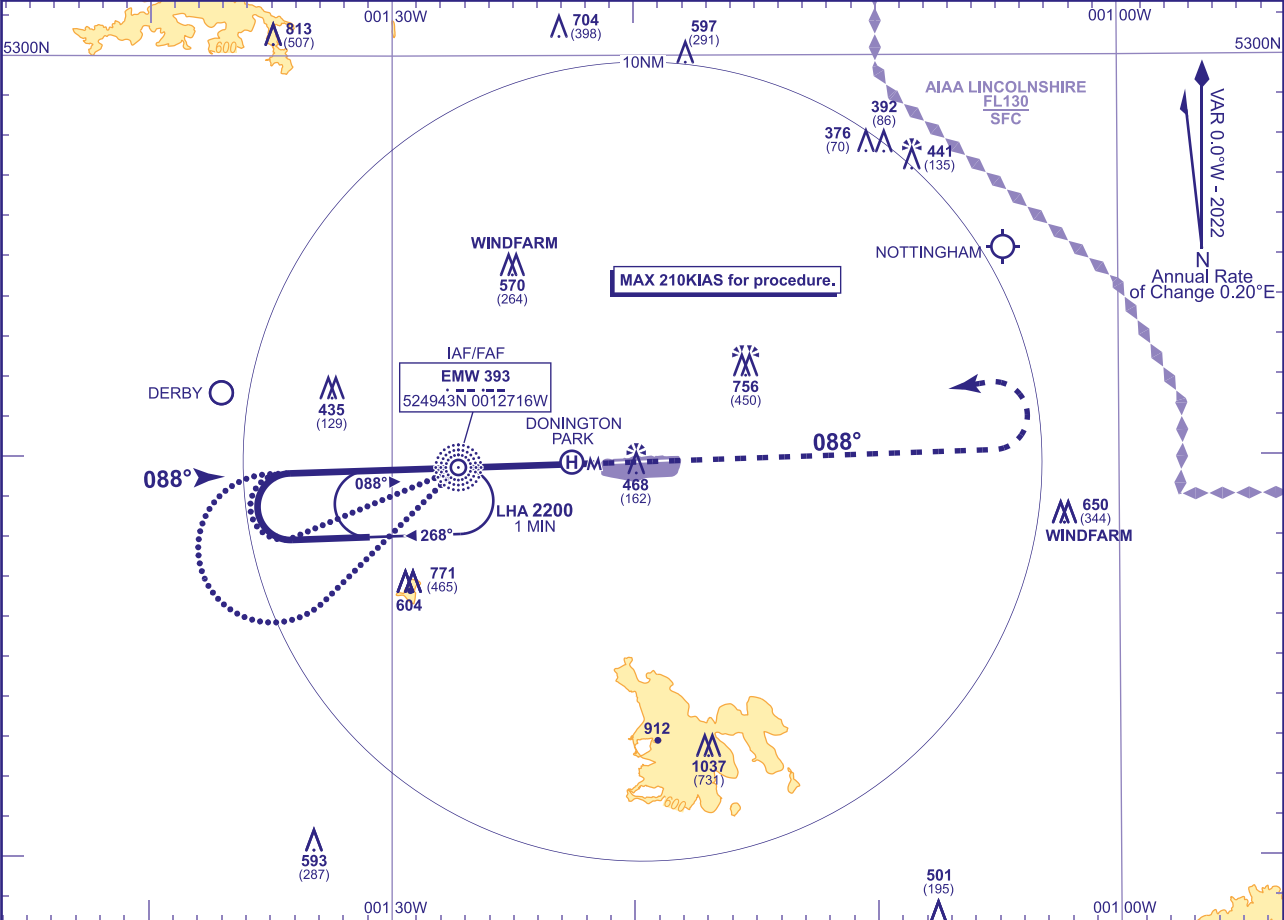


INSTRUMENT APPROACH CHART - ICAO

EAST MIDLANDS

 MSA 25NM ARP	RAD	126.180, 134.180	EAST MIDLANDS RADAR	AD ELEVATION	306	NDB(L) RWY 09 (ACFT CAT A,B,C,D)	
		120.130	EAST MIDLANDS DIRECTOR	THR ELEVATION	306		
	TWR	124.005	EAST MIDLANDS TOWER	OBSTACLE ELEVATION	1037 AMSL (731) (ABOVE THR)		
		121.905	EAST MIDLANDS GROUND				
	ATIS	122.680	EAST MIDLANDS INFORMATION	BEARINGS ARE MAGNETIC			
TRANSITION ALTITUDE						6000	



Aircraft Category		A	B	C	D	Rate of descent	G/S KT	160	140	120	100	80
OCA (OCH)	Procedure	720(414)	720(414)	720(414)	720(414)		FT/MIN	850	740	640	530	420
VM(C)OCA (OCH AAL)	Total Area	770(464)	800(494)	1160(854)	1160(854)	NDB(L) EMW to MAPt (3.4NM)	MIN:SEC	1:17	1:28	1:42	2:03	2:34

ALTERNATIVE PROCEDURE
Notify ATC. Fly outbound leg of baseturn on NDB(L) EMW QDR 248° for 1MIN 45SEC (CAT A,B), NDB(L) EMW 231° for 1MIN 15SEC (CAT C,D) descending to not below 2000(1694), then turn right to establish on the FAT. MAX 210KIAS.

NOTE 1 Aircraft unable to receive DME I-EMW notify ATC.
2 Lowest altitude to commence procedure from hold is 3000.
3 Aircraft will normally be required to hold not lower than 3000.